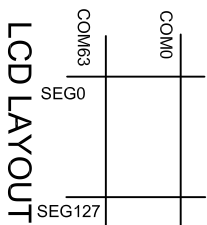
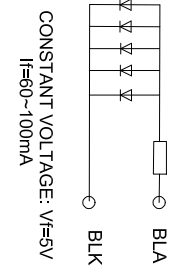
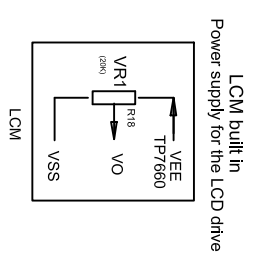
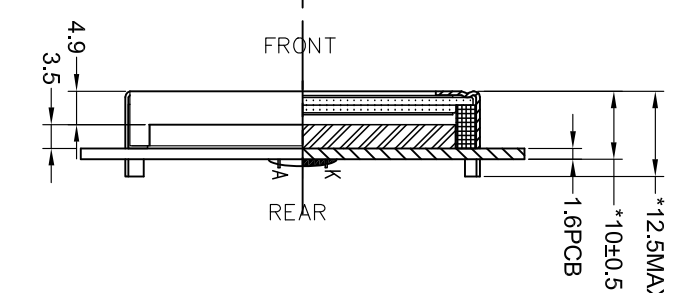
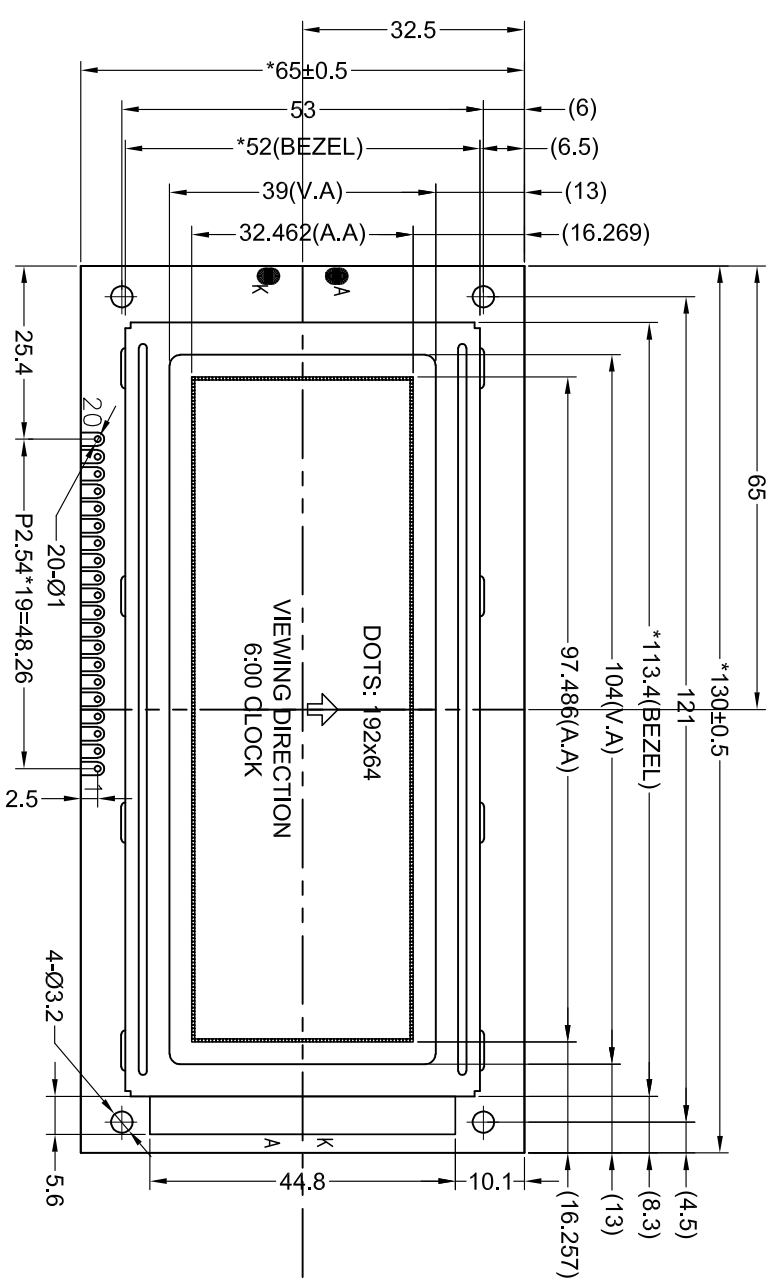
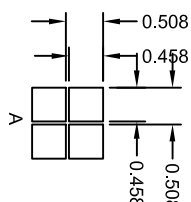


Customer approval :



Specification:

- 1). Driving: Duty:1/64,Bias:1/9,VEE:-4.9V,V0:-4.2V,VDD:5.0V.
- 2). Viewing direction: 6 o'clock
- 3). Display mode:STN/Blue/Negative/Transmissive
- 4). Operating temp:-20°C~+70°C
- 5). Storage temp: -30°C~+80°C
- 6). Control IC: UC10107/8 (Or Compatible)
- 7). Backlight: Edge White LED: 5.0V 75MA
- 8). dimensions with mark "*" are important
- 9). All the raw materials are RoHS compliant



Item Symbol	Function	Item Symbol	Function
1 VSS	Power Ground,0V	15 /CS1	Select Column1~64,Active Low
2 VDD	Power supply for Logic,+5.0V	16 /CS2	Select Column65~128,Active Low
3 NC	No Connection	17 /RST	Controller reset signal,Active Low
4 RS	Register selection,H:read,L:instructions	18 /CS3	Select Column129~192,Active Low
5 RW	Read/Write signal,H:read,L:write	19 NC	No Connection
6 E	Enable signal for Chip. L:effective	20 BLA	Anode of LED Backlight,+5.0V

REV	REVISION RECORD	DATE	MODEL NO.	19264999V11-5C80BLUNTR-85WG	GENERAL TOL:
A	FIRST ISSUE	2018/11/03	模组型号		± 0.25
B			APPROVED BY		
C			CHECKED BY		



深圳市三元晶科技有限公司
ShenZhen TCCLCD HI-Tech Co., Ltd.

(VDD:5.0V or 3.3V, BLA:5.0V or 3.3V, Display mode: STN/Blue OR STN/Yellow-Green, Fstn/Grey)